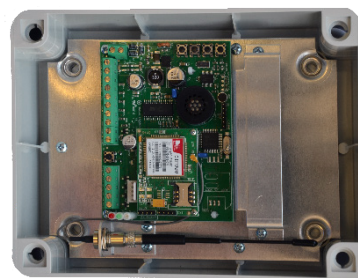


PKN4+ GSM VOICE & SMS COMMUNICATOR

FEATURES

- Built-in GSM module 2G, LTE
Frequency Bands:
- LTE-FDD B1/B3/B5/B7/B8/B20
GSM/GPRS/EDGE 900/1800 MHz
- 4 alarm inputs
(N.O.-normal open, N.C.-normal closed)
- 4 SMS messages for each input
- 4 voice messages (maximum length of 10 seconds for each input)
- 4 remote controlled outputs – by SMS
- 4 SMS messages (18 signs for each input)
- Easy programming (SIM card in your GSM phone or by SMS or by PC-GSManager3 Software)
- 3 LED monitoring
- Anti-tamper switch
- Standards: EMC 89/336 and CEI-79-2
- 2 service messages:
 - refill your SIM card (programmable time)
 - periodic test (1h – 240h) message



PKN4+ NAUTILUS Plastic box version



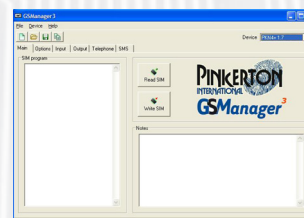
Metal box version

APPLICATION

- Standalone alarm unit
- Remote control other devices
(Out of physical range)
- Home care and alarm call
- Barrier open with out cost
(up to 200 telephone number)

TECHNICAL FEATURES

- GSM modul 2G,4G LTE
- Power supply 9 – 35V DC,
- Optional back-up battery 12V/1.2Ah
- Current consumption:
 - 35mA stand-by
 - 350mA transmitting-operating



Software GSManager



Pinkerton International, d.o.o.
Poslovna cona A 18, SI-4208 Šenčur, Slovenia
tel.:+386 4 236 48 00
info@pinkerton-int.si www.pinkerton-int.si